

FIBRE OPTIC PASSIVE COMPONENTS

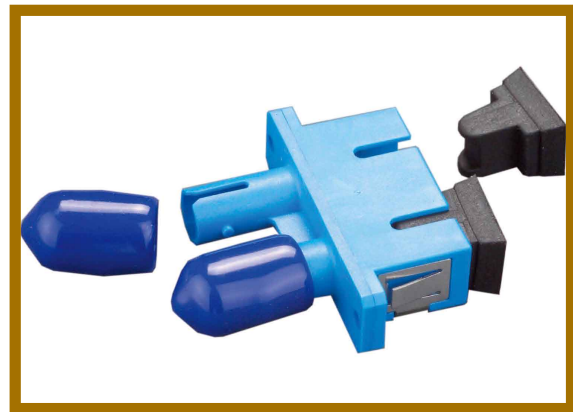
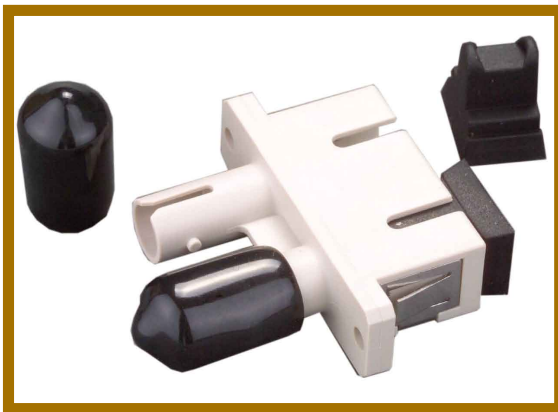
ADAPTERS

HYBRID FEMALE TO FEMALE ADAPTOR

These adapters are for changing from different connector styles with ferrule diameter of 2.5 mm. These come in both single mode and multimode variants to suit the application purpose. They can also be either metal or plastic housing and either simplex or duplex configuration.

Generally there are two types of alignment sleeve within an adapter, phosphor bronze for multi-mode or zirconia (ceramic) for single mode. In the case of the MT-RJ and MPO the alignment is carried out by two small pins fitted to one of the connectors, the adapter is purely to support and lock the connectors together in the distribution panel or wall box.

The range of SofeTek hybrid connectors allow different styles of connectors to be connected without the use of a hybrid patch lead and adapter. These high performance devices have been designed to interconnect different styles of 2.5mm ferrule connector.



Ordering information

Description	Part No.
SC SM Simplex Adaptor, Zirconia Sleeve, Plastic Blue Color	ADSCSXSM
SC SM Duplex Adaptor, Zirconia Sleeve, Plastic Blue Color	ADSCDXSM
SC SM Simplex Adaptor, Zirconia Sleeve, Metal	ADSCSXSM
SC SM Duplex Adaptor, Zirconia Sleeve, Metal	ADSCDXSM
SC/APC SM Simplex Adaptor, Zirconia Sleeve, Plastic Green Color	ADSASXSMP
SC/APC SM Duplex Adaptor, Zirconia Sleeve, Plastic Green Color	ADSADXSM
SC MM Simplex Adaptor, PB Sleeve, Plastic Beige Color	ADSCSXMM
SC MM Duplex Adaptor, PB Sleeve, Plastic Beige Color	ADSCDXMM
SC MM Simplex Adaptor, PB Sleeve, Metal	ADSCSXMM
SC MM Duplex Adaptor, PB Sleeve, Metal	ADSCDXMM
LC MM Duplex Adaptor, PB Sleeve, RJ-45 Footprint, Blue Color	ADLCDXMM
LC MM Quad Adaptor, PB Sleeve, SC Footprint, Blue Color	ADLCQUMMS
LC MM Quad Adaptor, PB Sleeve, SC Footprint, Metal	ADLCQUMMSMA