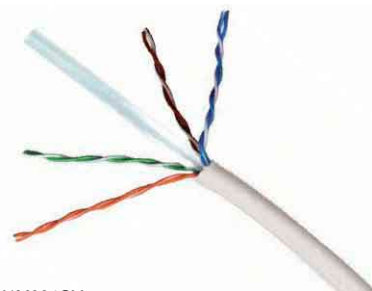


SofeTEK Category 6 UTP System

Category 6 UTP System represents exceptional value, with margin on all parameters beyond category 6 and Power Sum ACR out to 250 MHz. From the telecommunications room to the work area, all products exceed channel performance specifications set forth for category 6 by the TIA/EIA568B.2 and ISO/IEC11801.

- Bandwidth up to 250MHz
- Suited for Gigabit Ethernet
- 23 AWG solid bare copper
- Isolation member keeps good stability
- Meet different flame requirement
- Various colours



SKC6U1M004GY

- 24 AWG stranded bare copper
- Good margin in test
- PVC sheath or LSZH sheath
- Universal TIA/EIA 568A or TIA/EIA 568B wire map
- Various lengths and colours



SKP6UM010GY

- Dual block and toolless nake installation easy
- Be easy mounted at 90° or 180° degree
- Wiring cap secures connections
- Universal TIA/EIA 568A and TIA/EIA 568B labeling



SKJ6U1S202WH

- Support 1 Gbps network
- Backward compatible with cat 5e, cat 5 and cat 3 cables and patchcords
- Quick installation of 22 to 26AWG cables
- Easy patchcords management
- Universal TIA/EIA 568A and 568B labeling



SKR6U2N224BK

Order Information

Product Number	Description
SKC6U1M004GY	cat 6 23AWG UTP horizontal cable, PVC (CM) sheath, 305m
SKP6UM010GY	cat 6 UTP patchcords, PVC (CM) sheath, 1.0m
SKJ6U1S202WH	cat 6 UTP RJ45 jack, 180° degree dual block, White
SKR6U2N224BK	24 port, cat 6 UTP patch panel, 180° With dual block, black, 1U