

FIBRE OPTIC ASSEMBLIES

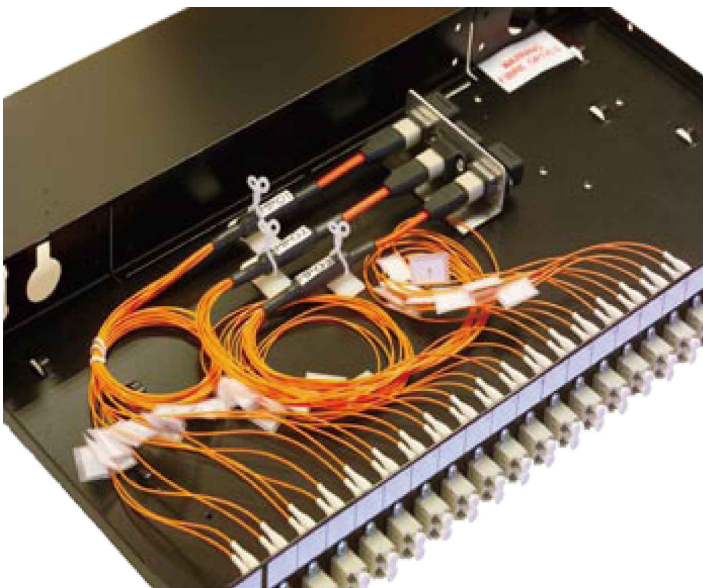
MPO SOLUTIONS

MPO PATCH PANEL

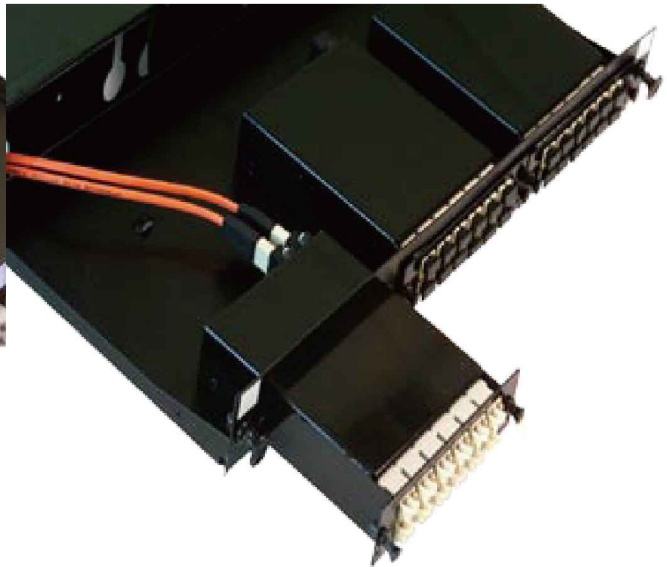
The MPO Plug 'n' Play system is the perfect solution for today's optical fibre installations, designed to enable a fibre network to be installed and commissioned in the shortest possible time. An MPO installation does not require specialist engineers or special tools as each component of the Sofetek MPO system is packed with a certificate showing its performance at the time of manufacture. This enables the installer to be sure the system will function from the moment the final part of the system is connected. The MPO system allows for the communication cabinets to be fully assembled in the installers own clean workshops allowing for the simple connection to the installed MPO cable assembly, when the system is commissioned.

The high density MPO connector allows simple plug 'n' play termination of the fibre backbone. Once installed the backbone needs to have the correct interface to suit the needs of the network hardware. Using the MPO connector on pre-terminated fibre solutions allows you to prepare the distribution units in the comfort of your own workshop. This can be taken a step further by having the distribution cabinets built in a clean facility and only taken to site when the installation is due to go live. MPO pre-termination saves time and reduces the possibility of damage to the fragile optical tails and reduces the risk of dirt ingress into fibre couplers.

The MPO is the answer to tomorrows challenges with pre-terminated fibre cable, but available from Sofetek today.



Sliding Tray Patch Panels



Modular Patch Panels and modules

Modular Patch Panel

19" 1u Black sliding tray patch panel for 3 modules.
Supports up to 36 SC connections with 3 MPO links or 72 MTRJ / LC connections with 6 MPO links.

Part Number : SP13XXX00

MPO Module

MPO 12 ports SC module
Black module pre-wired for 12 SC connections.
Designed to fit modular sliding tray panel.

Part Number: M-MPO-XX-12SC

MPO 24 port LC module
Black module pre-wired for 24 LC connections via two MPO connections. Designed to fit modular sliding tray panel.

Part Number : M-MPO-XX-24LC