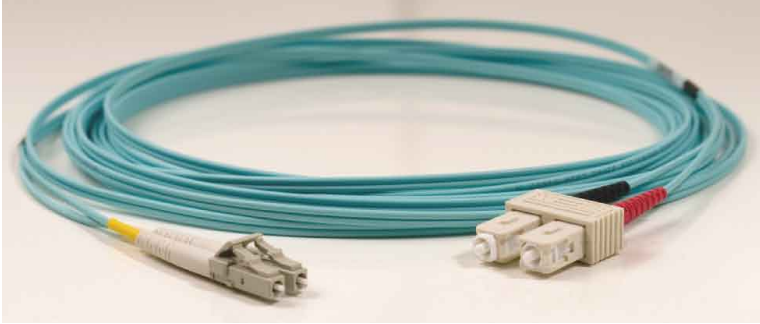


# FIBRE OPTIC ASSEMBLIES

## OM3 OPTICAL FIBER PATCH CORD



### Features

- Multimode & Singlemode applications  
ST/SC/FC/LC/E2000/MU Connector types
- Fast turn around of non-standard requirements
- Ultra polish & Angle polish options available all terminations are manufactured to exceed performance parameters set by industry standards
- Full tracability & test certification supplied with each assembly

OM3 optical fibre systems are the pinnacle of multimode fiber design. To utilise the new 10Gbs Ethernet protocols in an optical fiber system requires either a full blown singlemode solution or OM3 50/125 multimode fibre. The OM3 system allows for new VCSEL based hardware and old legacy LED based hardware to co-exist over your system. For the hard pressed IT manager an OM3 optical fiber solution will give a simple migration path through 1Gbs to 10Gbs and have security knowing the system they are installing today will give many years of solid, secure service to their network.

The SofeTEK OM3 patch cord utilises the best cable available along with the market leading connectors. Manufactured in SofeTEK's ISO 9001 approved manufacturing facility these cables can be relied upon, even with in the most mission critical systems.

SofeTEK has 15 years experience in manufacturing fiber optic cable assemblies. If you have a fiber network, no matter what the technology, SofeTEK can offer you a solution to your problem. Optical Fiber patch cords are a defining factor in ensuring your network performs to the highest level, with a SofeTEK patch cord you can be confident you are using the very best in cable, connectors and manufacturing.

### Specifications

#### Mechanical

Length: 1m to 10m ± 10mm

Other lengths available to order

Split Length (Duplex): 150mm ± 5mm

#### Product Packaging

Each patch cord is packaged individually and individually identified for traceability, test certification is supplied for each assembly.

#### Attenuation (dB/km)

(850/1300) 2.8/0.8

#### Bandwidth (MHz.Km)

(850/1300) 1500/500

#### Sheath colour

Purple, Orange & Aqua

#### Strength Members

Aramid strength members

#### Fire Performance

LSZH for Internal/External Applications

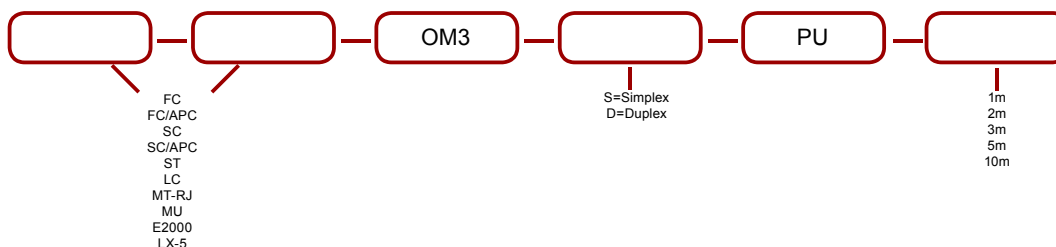
Flame Resistance IEC 60332-1

### Connector Specification

Optical Performance (Multimode)	Insertion loss: Max. 0.3 dB Typical 0.2 dB
Optical Performance (MT-RJ)	Insertion loss: Max. 0.5 dB
Operating Temperature	-40°C to +85°C
Intermateability Optically and mechanically compatible with all equivalent connectors.	Compliant with IEC 874-14.

## ORDERING INFORMATION

To order optical fiber assemblies the SofeTEK part number follows the following sequence.



- ① Other connectors available on request.
- ② MT-RJ is only available in MiniZip.
- ③ Also available in Purple(PU), Orange(OR)&Aqua(AQ)