

FIBER MANAGEMENT

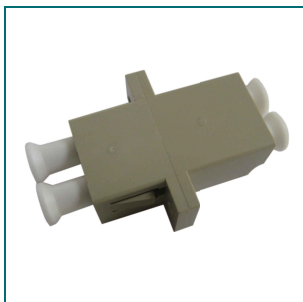
FIXED PATCH PANELS

FP02 24 POSITION ST/FC PATCH PANEL

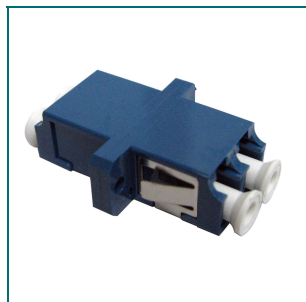
The fixed patch panel system in its basic form is supplied with the panels unloaded without adapters ready for you to install the adapter of your choice. The panel can also be pre-loaded complete with the required adapter and simple splice management kit, or pre-loaded with pigtails to meet your project needs. SofeTEK has an extensive range of 19" fixed patch panels, and with its own fiber optic engineers and design team can offer its customers a unique ability to design bespoke patch panels to order.



Part No.:FP0224SCS



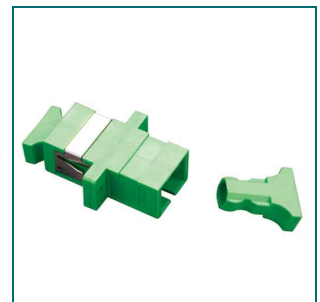
LC MULTIMODE DUPLEX



LC SINGLEMODE DUPLEX



SC MULTIMODE SIMPLEX



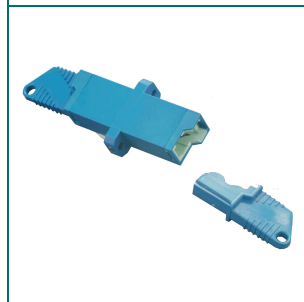
SCA SINGLEMODE SIMPLEX



SC SINGLEMODE SIMPLEX



MTRJ



E2000 SINGLEMODE



E2000-APC

Specification

Width	Depth	Height	Weight	Colour
19"-483mm	200mm	1U	2.8kg Fully loaded	Black RAL9004

Cable entry 4X20mm gland holes 2x25mm slotted holes.