

FIBER MANAGEMENT

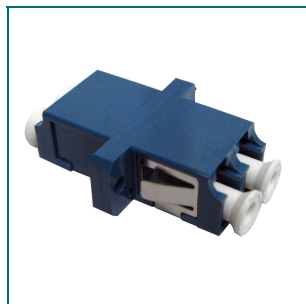
SLIDING PATCH PANELS

SP03-SLIDING 24 POSITION SC/LC/E2000 PATCH PANEL

The sliding patch panel system in its basic form is supplied with the panels unloaded without adapters ready for you to install the adapter of your choice. The panel can also be pre-loaded complete with the required adapter and simple splice management kit, or pre-loaded with pigtails to meet your project needs. The tray is locked in place with two simple to operate plastic catches, when fully extended the tray is designed to lower to 45°, or move the tray to the side and it will lock to lower only 10°. This provides the perfect working platform for simple installation or easy maintenance and access even after the panel is installed in the rack.



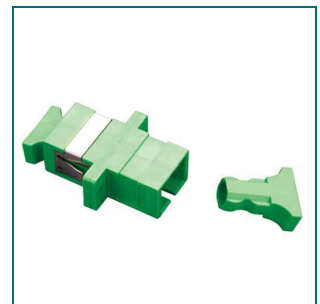
LC MULTIMODE DUPLEX



LC SINGLEMODE DUPLEX



SC MULTIMODE SIMPLEX



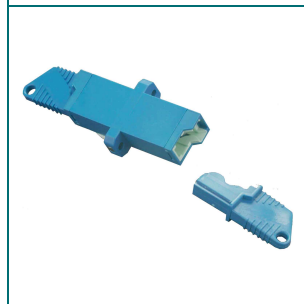
SCA SINGLEMODE SIMPLEX



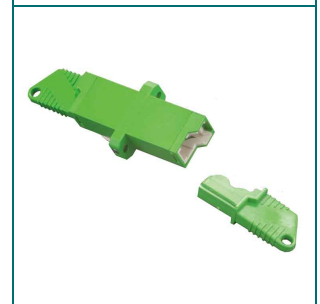
SC SINGLEMODE SIMPLEX



MTRJ



E2000 SINGLEMODE



E2000-APC

Specification

Width	Depth	Height	Weight	Colour
19"-483mm	200mm	1U	2.8kg Fully loaded	Black RAL9004

Cable entry 4X20mm gland holes 2x25mm slotted holes.